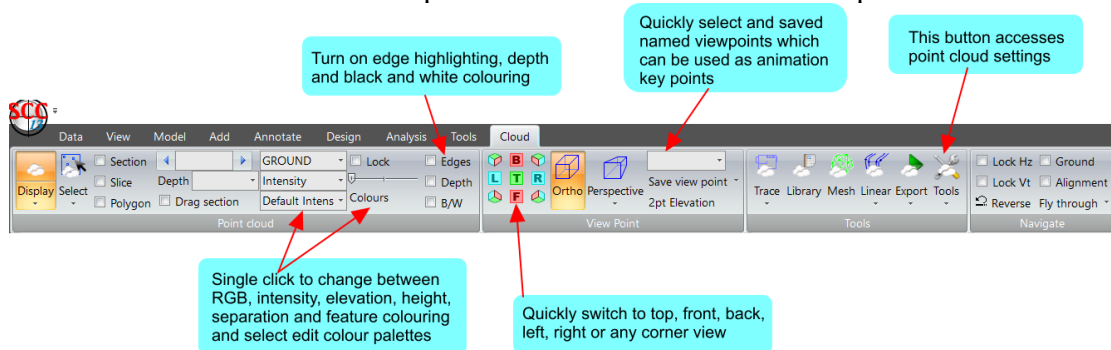




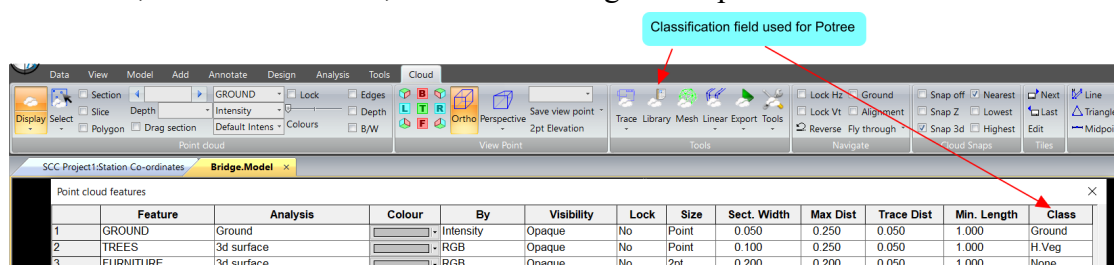
**Date:** February 2019  
**Re:** SCC 13.6.1

We are pleased to announce a new interim release of SCC with SCC 13.6.1 This release contains the following modifications from SCC 13.4.3;

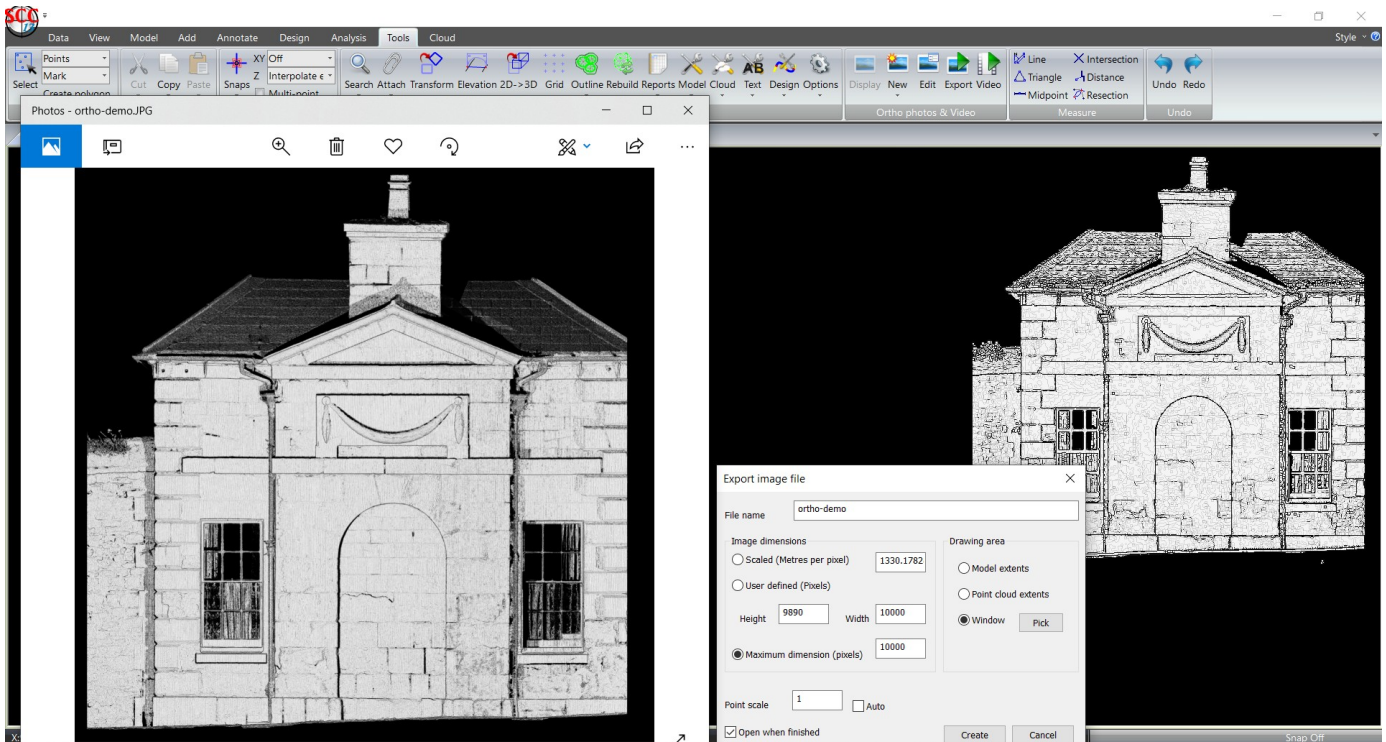
- The point cloud tool bar has been redesigned to allow quick changing of colour modes, palettes and standard view points. The point cloud settings button is now accessed via the tools button and the navigation and view point options have been split into two panels. The select option now includes a sub-menu to switch between point cloud and model selection options



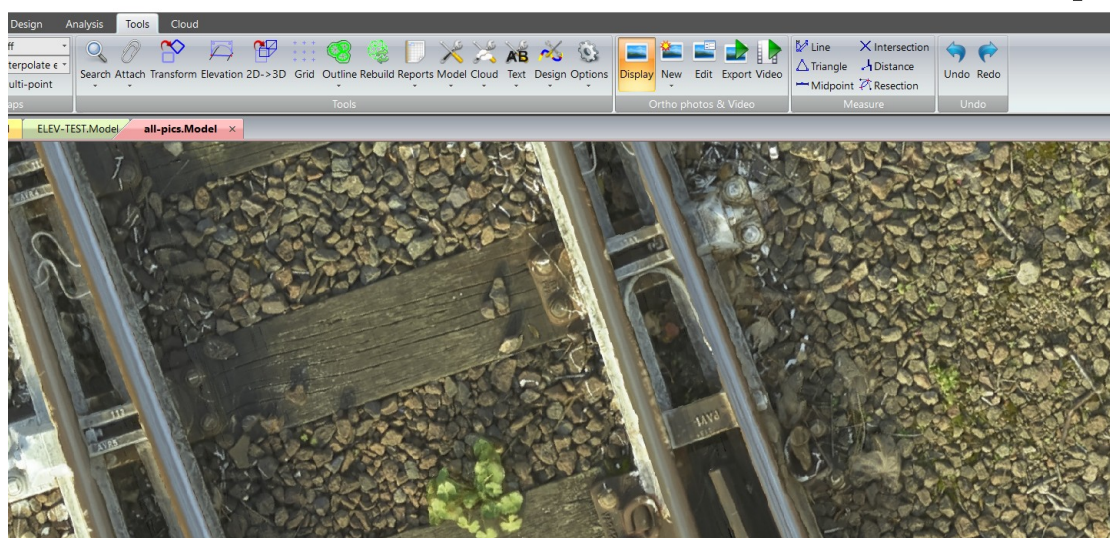
- An option has been added to publish point cloud data along with any additional model data to the web using potree viewing software. See <https://www.youtube.com/watch?v=f7iikXrmBA> for a short video showing the publishing process and <http://www.atlas-files.com/potree/potest.html> for an example of a publish model. Point clouds can be classified according to standard LAS classifications such that different groups can be turned on and off, and all model line, text and hatching is also published in 3d.



- A new option has been added to export the model as high resolution imagery, i.e. orthophotography when in plan view.



- An option has been added to allow insertion of multiple high resolution geo-referenced raster images into a model, e.g. JPG+JGW or TIFF and TFW pairs. Images get automatically trimmed to allow for more compact storage and efficient display. A test job containing eight 40,000x25,000 images along a railway added ~10 GB to the model, so using this option in conjunction with a large point cloud is likely to require a PC with at least 32gb of RAM. See the following video for more details [https://www.youtube.com/watch?v=HOE9hNeDg\\_A](https://www.youtube.com/watch?v=HOE9hNeDg_A)



- An option to hide or show all embedded photography has been added
- A new option has been added to allow for creation of high resolution smooth videos from SCC models in a range of MP4, AVI and Flash formats. Videos

can be based on key frame animation with linear interpolation, key frame animation with chainage based interpolation along an attached alignment, or simply by specifying a chainage interval per frame output looking along the alignment. Output resolution can be specified, which can be higher or lower than screen resolution as required, and frames per second can also be specified. The following video shows a sample of the output;

[https://www.youtube.com/watch?v=RGBtx\\_KONoc](https://www.youtube.com/watch?v=RGBtx_KONoc)

- A number of new tag codes have been added to SCC to better support Geomax field coding. These are arc with bulge, where bulge factor in D3, square by diagonals, square by point in centre and point on a side, and rectangle with a point in the centre and a point on a long and short side.
- The Geomax interface has also been updated to support single setup surveys with no orientation.
- A new export option has been added to allow export of currently active point cloud points to a new tile in the current model.
- The white line tracing tool has been updated to support extraction of white lines based on RGB difference rather than intensity, making it suitable for use with photogrammetry datasets extracted from UAV surveys.
- The white line tracing tool now has separate options for tracing broken and continuous white lines.
- The trace linear tool has been updated such that the template gets updated based on intermediate chainages when 'Update Template' is ticked.
- The multi-select option now also works when selecting overlapping text in addition to points.
- An extra button has been added to the text tab of the annotation toolbar to hide/show all text
- The snap controls tab has also been added to the annotation toolbar
- The dialogs to trace sections and trace selected points have been simplified, and defaults added to the point cloud library in cases where they're not setup.
- Tiling now defaults off when importing point clouds rather than using project defaults.
- New view point options have been added to delete the current view point and clear all view points.
- A new option to rename symbols has been added to the edit symbol insert points dialog
- Additional options to specify the symbols used for level crosses and circles have been added to the cad naming section of the units and data checking tab in general options.
- Mixed case text in layer names are now carried through to CAD
- An extra option has been added to the MX output to allow disabling checks of P-string and L-string naming conventions
- A bug has been fixed where 2d points with zero levels were not being snapped to when station snapping enabled
- The PTS import has been updated to support LF terminated files in addition to CR/LF and CR terminated
- The ADB tree import function has been updated to support water demand circles

This release is available for immediate download using the links below;


Full install (1.5gb): [www.atlas-files.com/scc-users/setup-scc-13-6-1-full.exe](http://www.atlas-files.com/scc-users/setup-scc-13-6-1-full.exe)

Update (160mb): [www.atlas-files.com/scc-users/setup-scc-13-6-1-update.exe](http://www.atlas-files.com/scc-users/setup-scc-13-6-1-update.exe)

MSI full (1.6gb): [www.atlas-files.com/scc-users/seto-scc-13-6-1-full-msi.zip](http://www.atlas-files.com/scc-users/seto-scc-13-6-1-full-msi.zip)

MSI update (1.6gb): [www.atlas-files.com/scc-users/setup-scc-13-6-1-update-msi.zip](http://www.atlas-files.com/scc-users/setup-scc-13-6-1-update-msi.zip)

Please note running these installations requires administrator privileges to properly install all components and that all components (SCC, Faro SDK, Trimble Link Engine, HASP driver and VS service packs) must all be installed for the installation to work. SCC r13 with the ribbon interface is currently supported on 64 bit versions of Windows 7 or later, SCC r12 classic is available for 64 and 32 bit versions of Windows 7 or later.

 We have a youtube channel of video tutorials covering most of the typical uses of SCC [here](#) We are regularly adding to this channel so if there is any specific area you would like to see covered by a video tutorial, please let us know. Please subscribe to our channel to keep updated with new material.

If you would like a demonstration of the new features or any existing features of SCC we can be contacted at 003531 4958714 (Ireland), or in the UK via +44 (0)1767 666100 (Visual-ize). The SCC r13 brochure can be downloaded [here](#)

 To keep up to date with developments in SCC please join our user forum [here](#) or Linked In group [here](#)