

# Atlas Computers Ltd

15 Moyville Lawns,  
Taylors Lane, Rathfarnham  
Dublin 16  
Ireland

Tel: +3531 4958714/5/6  
Fax: +3531 4958717

Email: [sales@atlascomputers.ie](mailto:sales@atlascomputers.ie)  
[support@atlascomputers.ie](mailto:support@atlascomputers.ie)

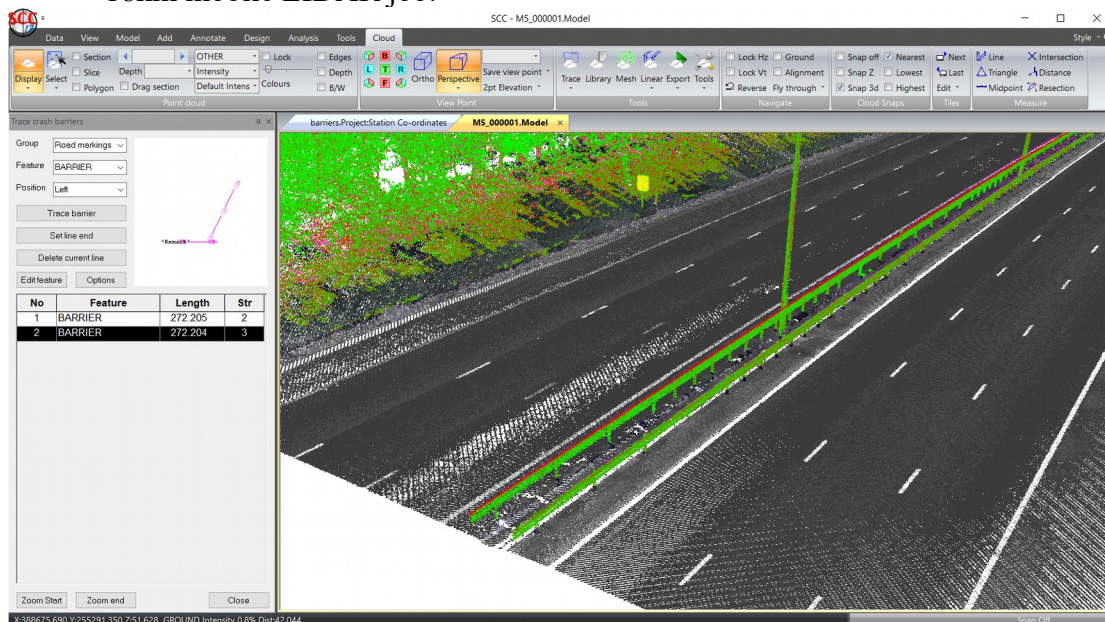
Web: [www.atlascomputers.ie](http://www.atlascomputers.ie)



**Date:** May 2019  
**Re:** SCC 13.15.1

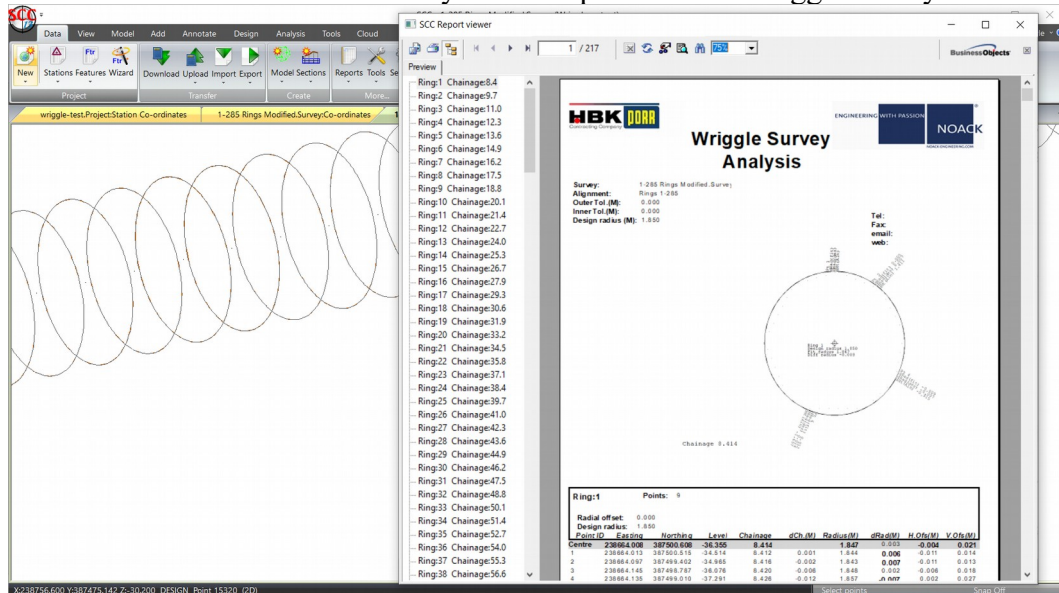
We are pleased to announce a new interim release of SCC with SCC 13.15.1. This release contains the following modifications from SCC 13.6.1;

- A new option has been added to accurately extract crash barriers from point clouds, enabling very long crash barriers to be extracted with a minimal number of key strokes. We've added a [tutorial video here](#) which covers rapid automated extraction of crash barriers, white lines and road edges from an 18km mobile LIDAR job.



- A new option has been added to extract break lines such as edge of road, pavements and walls
- The white line extraction tool has been improved to better handle poorly defined white lines. In test cases this has allowed extraction of a dashed white line of 18km in two mouse clicks.

- Drawing speeds on line work for very large models has been improved dramatically, with redraw speed about 5x faster than the previous release of SCC when tested against large mobile derived LIDAR jobs.
- The ground filtering tool has been improved to clean noisy data with a much higher degree of accuracy
- The wriggle survey processing has been updated to allow inclusion of annotated tunnel section graphics and additional titles in the output reports. This includes new section styles and report files for wriggle surveys.



- A new feature symbology has been added to allow you to create text by three points, where the first two points are the base of the text and the third is a high point. If done from the field, you can place a remark on the first or third point which will get used for the text. If not, the feature description will be used. You can use the `↵` character as a line separator for multi-line text here.
- A new point type has been added for geomax style arcs, i.e. arcs specified by two points and a bulge factor, allowing these points to be masked out like curve points.
- The manual trace linear tool now allows you to specify fixed width and fixed height elements in your template, makes it easier to draw more aesthetically attractive kerb lines.
- A new option has been added to import a Velodyne events mobile LIDAR track file.
- A new option has been added to the redraw text annotation dialog to allow for searching for all text links over a specified length. Long links are highlighted and you can press F2 to cycle between them
- Support has been added for importing LAS and E57 files in US survey feet
- The classic interface has been updated to support Geomax feature library output.
- The option to hide or show all text has been added to the classic text annotation toolbar
- The filter ground option now ignores locked layers and points
- The (ALL) option in the point cloud feature tool bar now also works for pixel size, locking layers and setting features to black and white (B/W).
- A new option has been added to select point cloud tiles graphically

- A new option has been added to create a two point plan, e.g. to align the plan to the facade of a building
- The option to compute design separation now includes use of alignment offsets where there is no template
- The trace linear feature option to delete all template points now also prompts to delete all section points.
- A bug has been corrected where colouring by density did not work for the upper parts of a scan in cases where the model was taller than it was wide, e.g. in the case of a sky scraper.
- A spelling error in the point cloud data selection dialog has been corrected.
- The angular residual tolerances on resections by sine rule have been updated to allow for very short legs, e.g. for scanner control inside buildings
- Point cloud redrawing speed has been improved further for very large scans
- A bug has been corrected where failing to snap in the point cloud was creating a point at zero when adding data, it now defaults to the last level.
- A bug has been fixed where changing all points on a string from DTM to approx was leaving the cross on the string if any of the text on that string had been edited and the option to redraw annotation with string edits was disabled
- A bug has been fixed where breaking links to create two string was causing the new string to get re-annotated
- A bug has been fixed editing a trimmed string that was trimmed in the middle of a curve fit was causing the trim point to be deleted if that string was subsequently edited
- A bug has been fixed in printing the model from a sheet layout would lose data if the view was updated prior to the printing completing
- The dialog for adding and editing text has been resized to work better when used in conjunction with the feature picking sidebar
- A bug has been fixed where GIS list attributes were not working with the model query option
- Adding the text /OUTLINE to any whiteline feature removes the hatch and instead draws the white line outline as a polygon
- Support for hatching has been added to the Google Earth KML export

This release is available for immediate download using the links below;

Full install (1.5gb): [www.atlas-files.com/scc-users/setup-scc-13-15-1.exe](http://www.atlas-files.com/scc-users/setup-scc-13-15-1.exe)

Update (160mb): [www.atlas-files.com/scc-users/setup-scc-13-15-1-update.exe](http://www.atlas-files.com/scc-users/setup-scc-13-15-1-update.exe)

MSI full (1.6gb): [www.atlas-files.com/scc-users/setup-scc-13-15-1.zip](http://www.atlas-files.com/scc-users/setup-scc-13-15-1.zip)

MSI update (1.6gb): [www.atlas-files.com/scc-users/Setup-scc-13-15-1-update.zip](http://www.atlas-files.com/scc-users/Setup-scc-13-15-1-update.zip)

Please note running these installations requires administrator privileges to properly install all components and that all components (SCC, Faro SDK, Trimble Link Engine, HASP driver and VS service packs) must all be installed for the installation to work. SCC r13 with the ribbon interface is currently supported on 64 bit versions of Windows 7 or later, SCC r12 classic is available for 64 and 32 bit versions of Windows 7 or later.



We have a youtube channel of video tutorials covering most of the typical uses of SCC [here](#) We are regularly adding to this channel so if

there is any specific area you would like to see covered by a video tutorial, please let us know. Please subscribe to our channel to keep updated with new material.

If you would like a demonstration of the new features or any existing features of SCC we can be contacted at 003531 4958714 (Ireland), or in the UK via +44 (0)1767 666100 (Visual-ize). The SCC r13 brochure can be downloaded [here](#)



To keep up to date with developments in SCC please join our user forum [here](#) or Linked In group [here](#)