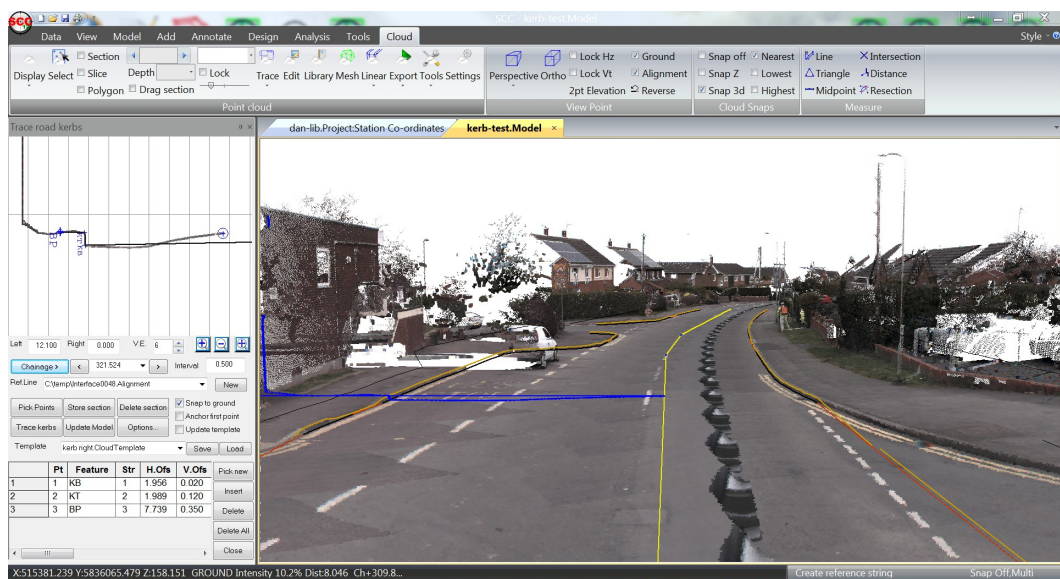




Date: June 2017
Re: SCC release 12.3.1

We are pleased to announce a new interim update to SCC r12 with SCC 12.3.11. This release contains the following modifications from SCC 12.2.18;

- Support has been added for Geomax instruments running X-PAD, including download of total station and GPS data, images, and upload of SCC feature libraries. For more information on using SCC with Geomax, contact Tom Button of Visual-ize on +44 (0)1767 666100.
- A new option has been added to the point cloud module to **automatically** trace kerbs. This rapidly generates top and bottom of kerb for either or both sides of the road based on a rough alignment, and also automatically inserts drop kerbs where kerb height falls below a specified value. Results can be quickly reviewed and easily edited, allowing kilometres of kerbing to be accurately traced in a few minutes. A sample video covering the process is available here; www.atlas-files.com/scc-users/pegasus-kerbs.mp4



- Automated rail tracing routines have been enhanced to support noise detection and elimination from scan data.
- Options on linear tracing dialogs have been simplified to move kerb, rail, graphic and analysis options into separate tabs.
- Colour scheme editing for relief contours and point cloud height, intensity and separation have been updated to allow rescaling based on specified range or interval.
- Additional fields have been added to the feature library to specify whether dimensions are mandatory, and to allow for choice lists for remarks. These values are used when uploading the feature library as a code list to Geomax X-Pad, Leica Captivate and Leica Viva instruments.
- The height transfer tool has been added to allow pre-selection of data
- The feature wizard has been updated such that changes only get made when the Apply button is pressed and details of all changes are written to the log file
- The GPS X,Y,Z download option now supports *Point No, X, Y, Z, Feature, Remark, D1, D2, D3* as an additional input format.
- Warnings and errors written to the log-file during survey reduction now include raw observation numbers.
- A new version of the Leica HexMLPC translator has been included which address a number of export issues.
- The import speed for very large GENIO files has been improved significantly
- A bug in the traverse report where height misclosures for loose legs was being mis-reported has been fixed.
- The option to lock elevation when moving points in plan now works with other snaps enabled
- A bug has been fixed where the option to press 'N' to turn snaps off was not working in SCC 12.2.18.
- A bug has been fixed where running out of system resources with multiple point clouds open was leading to a crash.
- A bug has been fixed in the cut and fill balancing which was not working for certain models.

Full install (1.5gb): www.atlas-files.com/scc-users/setup-scc-12-3-1-full.exe

Update (370mb): www.atlas-files.com/scc-users/setup-scc-12-3-1-update.exe

MSI full (1.5gb): www.atlas-files.com/scc-users/setup-scc-12-3-1-full-msi.zip

MSI Update (368mb): www.atlas-files.com/scc-users/setup-scc-12-3-1-update-msi.zip

Please note when running these installations under Windows 7 or later, download the set-up program, and from explorer use the **Run as Administrator** option given by right clicking the downloaded file. SCC r12 with the ribbon interface is currently supported on 64 bit versions of Windows 7 or later, SCC r12 classic is available for 64 and 32 bit versions of Windows XP or later.

In order to bring new users up to speed, we are constantly updating our library of video tutorials covering many of the typical uses of SCC. If there is any specific area you would like to see covered by a video tutorial, please let us know.

If you would like a demonstration of the new features or any existing features of SCC, we can be contacted directly at 003531 4958714. The SCC r12 brochure can be downloaded [here](#).

To keep up to date with developments in SCC please join our user forum at <http://www.atlascomputers.ie/smf/index.php> or LinkedIn group at <http://www.linkedin.com/groups/SCC-users-4971870>