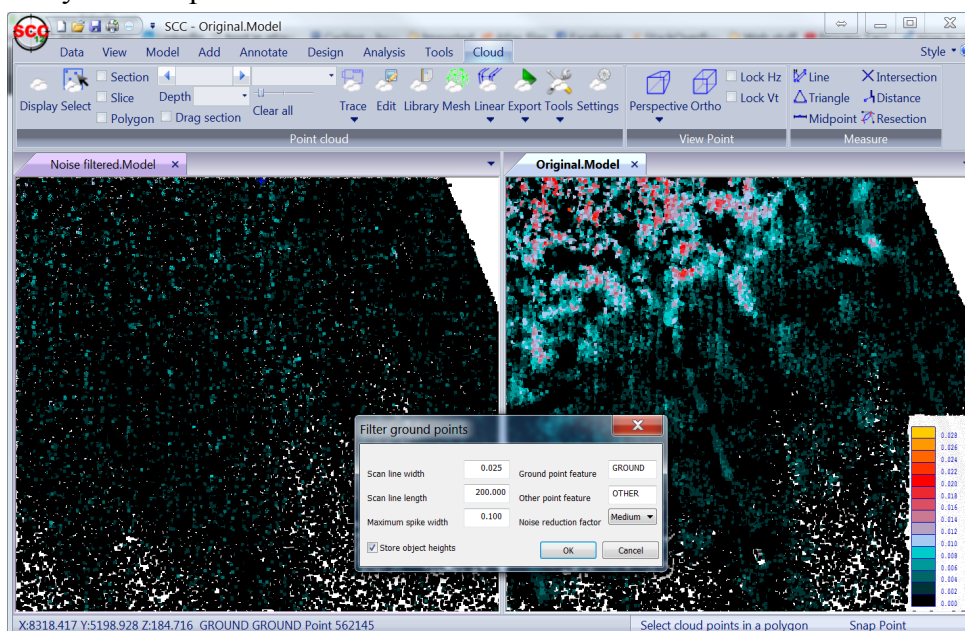




Date: September 2016
Re: SCC release 12.1.2

We are pleased to announce a new interim update to SCC r12 with SCC 12.1.2. This release contains the following modifications from SCC 12.0.16;

- Full support has been added for OSGM 15 Geoid and OSTN15 Grids for the UK and OSGM 15 for Republic of Ireland and North of Ireland. This includes as implementing Grid Inquest 2, such that models can be transformed between old grids and geoids into the new grid, and on download of ETRS89 from GPS. The option to use Grid Inquest 1 is still available where required, and when using Grid Inquest 2 an additional option is available to select between OSTN02/OSGM02 and OSTN15/OSGM15. There is a good article in the August edition of Geomatics World covering the differences in using the new grid, available online [here](#) OSTN15/OSGM15 can be accessed using the transformation options and by selecting appropriate geoid and coordinate shift files on download from Leica and Trimble.
- The option to filter ground points from a point cloud has been enhanced to include noise detection and removal options, and is also now considerably faster to run. This enables creation of more accurate DTMs and ground analysis from point clouds that include some scan noise.



- The IFC BIM export now includes additional options to include strings as well as surfaces, such that objects such as surveyed overhead lines can be taken into BIM packages such as REVIT for clearance purposes.
- An option has been added to the AutoCAD export to support multi-line text MTEXT entities. When used in conjunction with the feature library setting to combine all text, this will result in all annotation for a given survey point going out as a single multi-line piece of text.
- An additional model option has been added to allow copying of the level from one point to another. This is available on the model ribbon on the query sub-menu under Transfer heights, or via Edit / Edit / Strings / Transfer heights on the classic UI.
- An extra point cloud selection option has been added to for all points in an existing polygon string.
- Support has been added for multi-line text in text macros, where embedding a `-` character in the macro value creates a new line.
- An additional option has been added to the perspective camera settings for pixel scaling, which allows for improved display of large point clouds, such as UAV data and vehicle mounted LIDAR, in perspective
- The traverse reduction has been updated to better handle reversed rounds with an additional starting observation and for reversed rounds with different observation sets within the same setup (e.g. AABBA,ACCA,ADDA) where some GSI format files are likely to duplicate the first observation in a setup.
- The TDS download format has been enhanced to support advanced coding to allow more streamlined operation with MicroSurvey data collectors
- The LandXML interface has been enhanced to include improved support for Topcon Magnet base data collectors
- Point cloud snaps now show the tentative point cloud snap position for the current cursor position as an aid to drawing strings on a cloud.
- Point cloud snaps for high/low snaps now work on the larger of either the search distance or the maximum number of pixels from the cursor, as specified in the point cloud options dialog.
- A bug has been fixed where mouse buttons settings in General options were not being saved
- A bug has been fixed where the snap to string option was not interpolating levels on the snapped string
- A bug has been fixed where tunnel sections through point clouds were always including an annotator at the rightmost point of the section regardless of annotation settings
- The point cloud option to compute height differences had been omitted from the ribbon menus but has now been included

This is available for immediate download using the links below,

Full install (1.3gb): www.atlas-files.com/scc-users/setup-scc-12-1-2-full.exe

Update (189mb): www.atlas-files.com/scc-users/setup-scc-12-1-2-upgrade.exe

MSI full (1.3gb): www.atlas-files.com/scc-users/setup-scc-12-1-2-full-msi.zip

MSI Update (180mb): www.atlas-files.com/scc-users/setup-scc-12-1-2-upgrade-msi.zip

Please note when running these installations under Windows 7 or later, download the set-up program, and from explorer use the **Run as Administrator** option given by right clicking the downloaded file. SCC r12 with the ribbon interface is currently supported on 64 bit versions of Windows 7 or later, SCC r12 classic is available for 64 and 32 bit versions of Windows XP or later.

In order to bring new users up to speed, we will be developing a library of video tutorials covering many of the typical uses of SCC. If there is any specific area you would like to see covered by a video tutorial, please let us know.

If you would like a demonstration of the new features or any existing features of SCC, we can be contacted directly at 003531 4958714 or via SCCS at 0044 1480 404888. The SCC r12 brochure can be downloaded [here](#).

To keep up to date with developments in SCC please join our user forum at <http://www.atlascomputers.ie/smf/index.php> or LinkedIn group at <http://www.linkedin.com/groups/SCC-users-4971870>