

# release 11

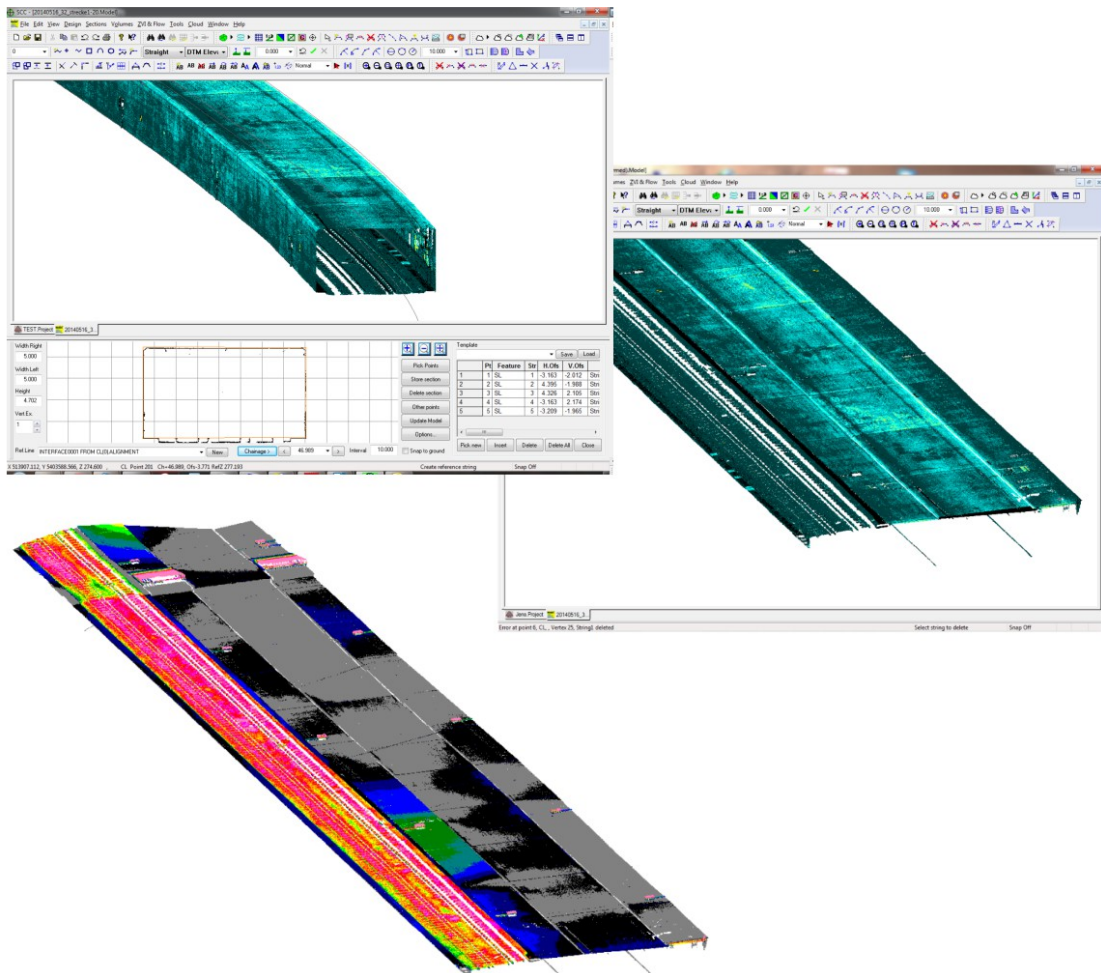
# SCC

## Survey Control Centre

**Date:** July 2014  
**Re:** SCC release 11.0.21

We are pleased to announce a new interim release of SCC with SCC 11.0.21. This release contains the following modifications from SCC 11.0.8;

- New tools have been added to develop scanned tunnels, both cylindrical and based on multiple section templates, into flattened isopach models highlighting differences between a design surface and scanned surface.



This enables easy analysis and display of deformation and clash detection for most scanned tunnel works, where the analysis and display includes all scanned points rather than a discrete sample.

- Support has been added to allow scanned point clouds to be transformed between different local and national grids.
- A number of enhancements and fixes have been added to the EACSD river section output options, including support for reversing the centreline chainage, and creating a model of the output data for QA purposes. Many thanks to Michael Rowan of Malcolm Hughes Land Surveyors for the numerous test cases and suggestions that were invaluable in completing this.
- The rail overlap function has been enhanced to include options to report string to string differences rather than string to mean generated string, and to specify maximum distance between survey points to better support shorter strings.
- The two prism rail function has been updated to carry original point IDs and remarks into the output file, include left and right in the cant report, and include signed cant in the output file for left and right.
- The station mis-closure and check shot report has been updated to include three decimal places on rod heights, and widened to show dZ on the check shot section.
- The tape and offset and bearing and distance dialogs have been updated to allow interpolation of levels from the TIN model for newly created points.
- A bug has been fixed in the vertical design, where moving from vertical design to plan and back was causing the vertical design side-bar to be closed.
- A bug has been fixed in the Trimble DC download, where numerical remarks were being treated as dimensions in cases where expected dimensions were absent.
- The installation has been updated to better support inclusion of additional required DLL files when installing on older XP PCs.

This is available for immediate download using the link below.

Full install (995mb): [www.atlas-files.com/scc-users/setup-scc-11-0-21-full.exe](http://www.atlas-files.com/scc-users/setup-scc-11-0-21-full.exe)

Update (75mb): [www.atlas-files.com/scc-users/setup-scc-11-0-21-update.exe](http://www.atlas-files.com/scc-users/setup-scc-11-0-21-update.exe)

Please note when running these installations under Windows 7 or 8, download the set-up program, and from explorer use the **Run as Administrator** option given by right clicking the downloaded file.

If you would like a demonstration of the new features or any existing features of SCC, we can be contacted directly at 003531 4958714 or via SCCS at 0044 1480 404888.

To keep up to date with developments in SCC please join our user forum at <http://www.atlascomputers.ie/smf/index.php> or LinkedIn group at <http://www.linkedin.com/groups/SCC-users-4971870>