

# Atlas Computers Ltd

15 Moyville Lawns,  
Taylors Lane, Rathfarnham  
Dublin 16  
Ireland



Tel: +3531 4958714/5/6  
Fax: +3531 4958717

Email: sales@atlascomputers.ie  
support@atlascomputers.ie

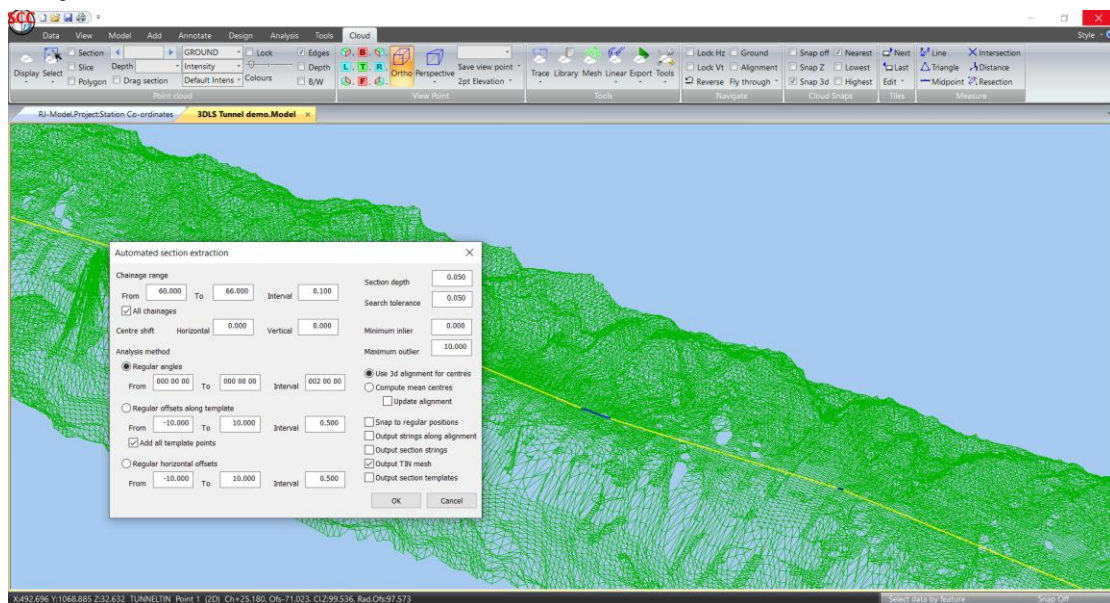
Web: www.atlascomputers.ie



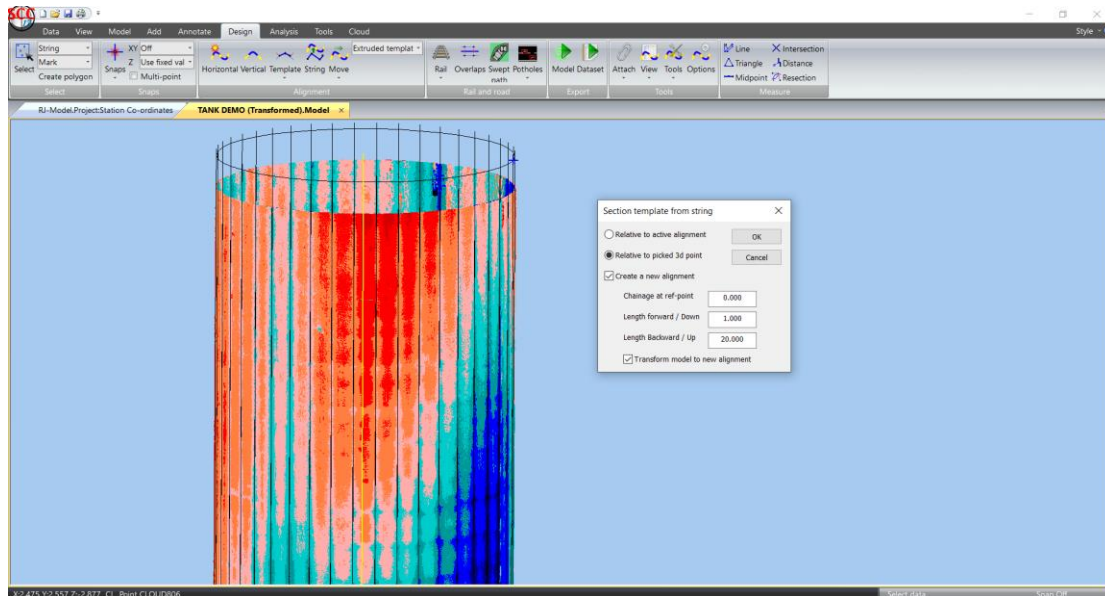
Date: December 2020  
Re: SCC 13.28.6

We are pleased to announce a new interim release of SCC with SCC 13.28.6. This release contains the following modifications from SCC 13.27.4;

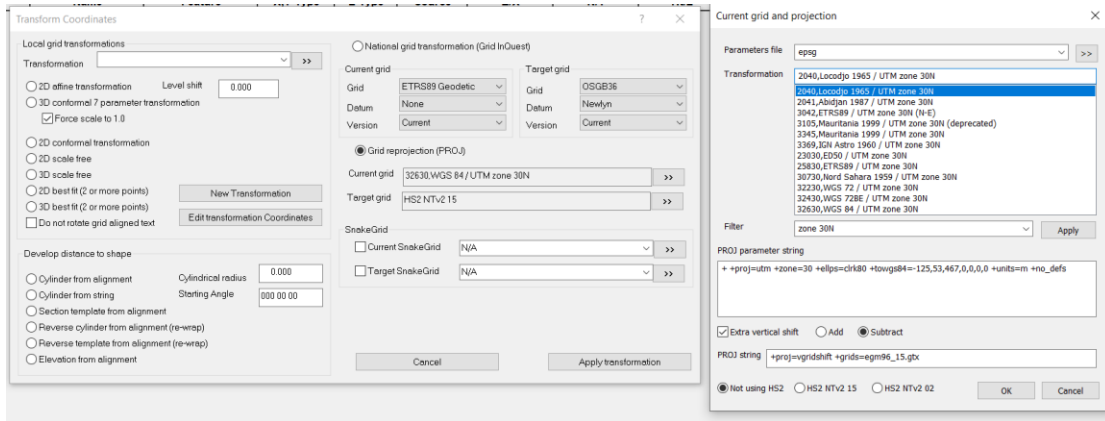
- A tunnel extraction tool has been added to the point cloud linear tracing options. This tool can be used to fit alignments to irregular tunnels, extract TIN meshes, sections and strings and create section templates to use as a design surface for later comparisons and clash detection. The following video illustrates the use of this tool for alignment generation and mesh extraction <https://www.youtube.com/watch?v=bqrvKLVg5ME> The tool can be accessed via **Cloud / Linear / Extract Tunnel**.



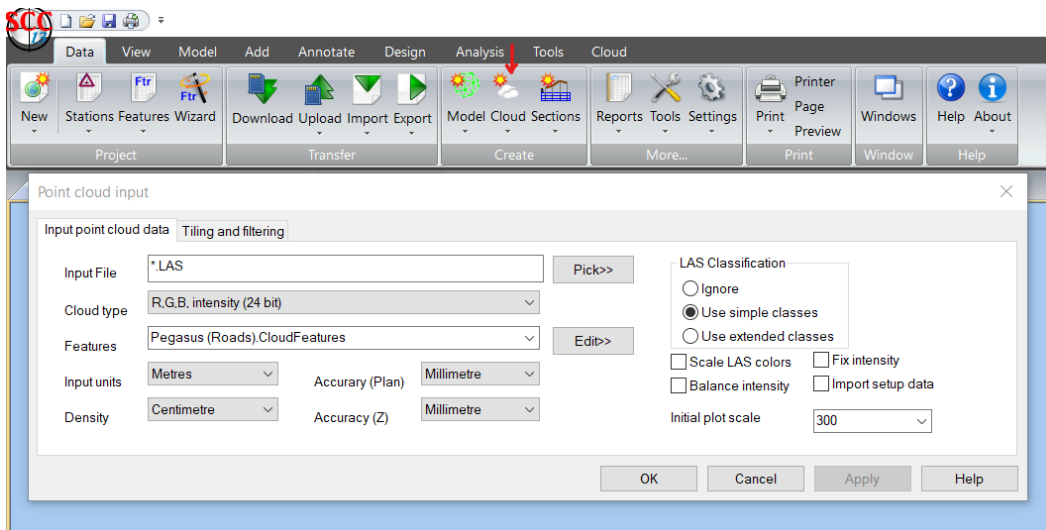
- A new tool has been added to create section templates from 2D polygon strings and extrude them to form design surfaces. This greatly simplifies tasks such as tank deformation and shaft verticality analysis. This can be accessed via **Design / Template / Section Template from string**. The following video shows how to use this tool  
<https://www.youtube.com/watch?v=weWmqvi-MCU>



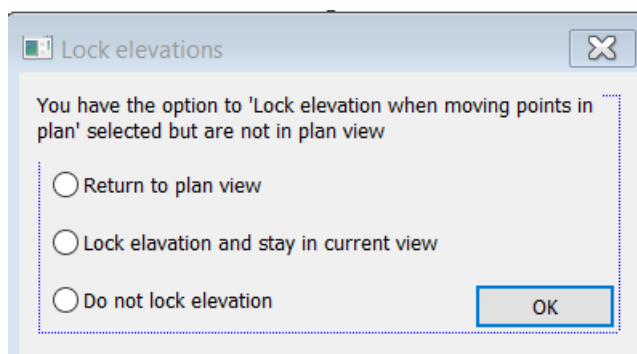
- Given the ever-increasing use of point clouds within the survey industry we have added certain point cloud functionality to the SCC Survey, SCC Pro and SCC Design licenses. The SCC Survey license will now allow you to download, view, hide and navigate point clouds, including changing colours. The Pro version also include options to manually classify point clouds, and manually digitise over point clouds using all point cloud snap tools. The Design version will also be able to calculate sections and volumes from point clouds. The SCC point-cloud pro license includes all the additional automated tracing, classification and analysis tools enabling rapid extraction of 3d vector data from the point cloud on a large scale. This includes automatic classification of ground and building points, automatic extraction of rails, kerbs, white lines, barriers, walls, overhead lines and break-lines; Automatic extraction of trees, lamp posts and other street furniture; Automatic tracing of floor plans and sections; Automatic extraction of pot holes and road defects; Wrapping, unwrapping and transformation of point clouds; Swept path analysis; OLE and tunnelling tools; Cloud to cloud and cloud to design comparisons for monitoring and deformation purposes
- Additional transformation options have been added between HS2NTv2 and other EPSG transformations and vertical datums. Transformation speeds have also been greatly increased. This allows transformation from grids such as UTM zone 31N / EPSG:32631 and HS2NTv2. It also allows datum shifts from any other datum to HS2GM15 and HS2GM02. This is typically useful when converting large point clouds provided in these grids into the HS2 grid, which is common when using photogrammetry and GIS software that does not implement OSTN15 and OSGM15.



- Given the number of users migrating to network licensing, we've simplified and updated our documentation for using network licensing over VPNs. See <http://www.atlas-files.com/NetHASP%20SCC.pdf>
- The automatic extraction of rail strings from point cloud now creates a log file of missed and moved sections with details as to why a section could not be extracted at a given chainage, e.g. cant out of range, gauge out of range, rail head details out of tolerance etc..
- A new option has been added to the CAD export dialog to turn off hatching. This is primarily for 3D AutoCAD output which does not support complex 3D hatched entities. It works on model hatches, hatched symbols and hatched lines.
- Changed the Geomax download to default tag and DTM codes from the feature library and zero d1,d2 and d3 whenever the feature changes. This stops tags being carried without needing to set the option to default tag and DTM codes in the coordinate reduction options.
- The Geomax download now includes an option to store all point descriptions as remarks
- The Geomax download now supports the new DPV spline records implemented in the upcoming release of XPAD
- The point cloud model creation now has its own icon on the main toolbar and no longer displays the "Create model and triangulation" dialog. Plot scale is now included on the input point cloud dialog.



- The E57 point cloud import is now significantly faster than in previous versions.
- A bug has been fixed in the PTS input option where a 0,0 origin position was being created for some model which was causing issues with Zoom extents.
- The wriggle survey now includes options to plot surveyed point numbers in section and draw radials to them. The survey point numbers are also carried through to the report.
- A bug has been fixed where traverse reduction was causing an error on resection setups with no back-sight.
- Traverse reduction now applies the prism constant to the slope distance and turns off 'Apply prism constant' after doing the reduction to avoid double application.
- An option to turn off prism constant has been added when downloading from JXL but from testing and conversations with Trimble, this should not typically be applied.
- A bug has been corrected where text linking of macro text was being corrupted in certain cases when cutting and pasting between models.
- Dialog items relating to the centre / mid string created during rail extraction have been removed as these are now part of the rail template
- A bug has been fixed whereby section points on the manual linear feature extraction tool were not being shown in the correct colour for points coloured by height
- Fixed an issue in curve fit spacing by length. SCC was reducing the number of points on curve by length where the points were almost co-linear, as very long curves could have too many points. It now only does this where there are more than three points involved.
- Fixed an occasional crash in point clouds with more than 2 billion where Snap Low or Snap High was used
- Fixed an error in the OLE rail dialog where picking strings from the drop down rather than from screen was giving the wrong string
- A new dialog has been added when you have the option to lock elevation when moving points in plan view but you are not actually in plan view.



- Comma separators have been added to point cloud statistics to make the easier to read
- The speed of the option to join adjacent strings in a model has been greatly increased.
- The default save folder when saving files in SCC has been changed from the last folder used to the active project folder
- When you run or use SCC now without an active project, it will use **<SCC>\\_DefaultProject** as the project folder where <SCC> is the SCC projects folder

This release is available for immediate download using the links below;

Full install (1.5gb): <http://www.atlas-files.com/scc-users/setup-scc-13-28-6.exe>  
Update (130mb): <http://www.atlas-files.com/scc-users/setup-scc-13-28-6-update.exe>  
MSI full (1.5gb): <http://www.atlas-files.com/scc-users/setup-scc-13-28-6.zip>  
MSI update (130mb): <http://www.atlas-files.com/scc-users/setup-scc-13-28-6-update.zip>

Please note running these installations requires administrator privileges to properly install all components and that all components (SCC, Faro SDK, Trimble Link Engine, HASP driver and VS service packs) must all be installed for the installation to work. SCC r13 with the ribbon interface is currently supported on 64 bit versions of Windows 7 or later. SCC r13 classic is available for 64 and 32 bit versions of Windows 7 or later.



We have a youtube channel of video tutorials covering most of the typical uses of SCC here We are regularly adding to this channel so if there is any specific area you would like to see covered by a video tutorial, please let us know. Please subscribe to our channel to keep updated with new material.

If you would like a demonstration of the new features or any existing features of SCC we can be contacted at 003531 4958714 (Ireland), or in the UK via +44 (0)1767 666100 (Visual-ize). The SCC r13 brochure can be downloaded here

If there are any new features you would like to see added to SCC or have any problems with any of the existing features we'd be delighted to hear from you.



To keep up to date with developments in SCC please join our user forum here or Linked In group here